

THE CREEPER

1st Eb ALTO SAXOPHONE

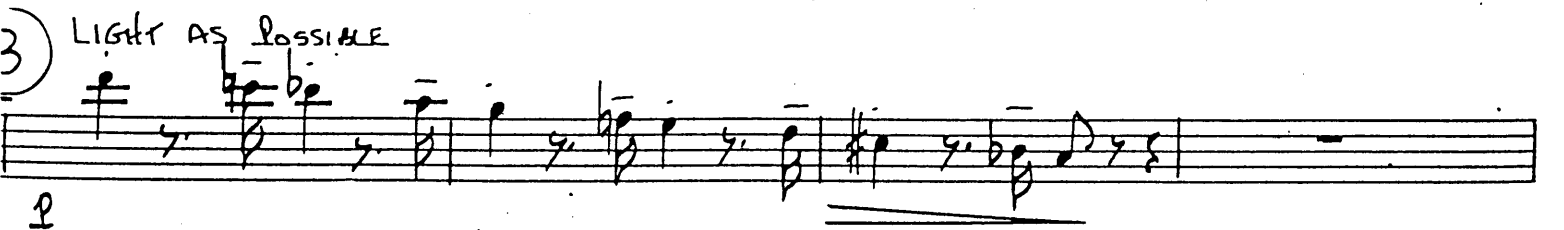
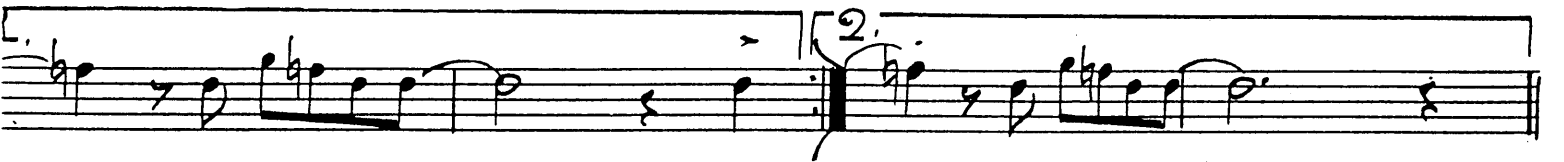
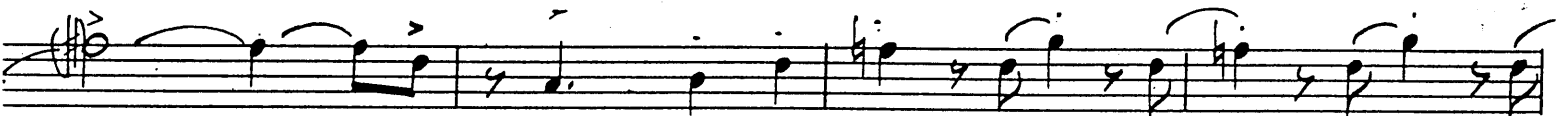
Composed and Arranged by
NEAL HEFTI

MEDIUM "Solo" $\text{♩} = 120$

LEGATO TONGUE



A) Solo
LONG SLIDE



© Copyright 1961 by Neal Hefti Music, Inc., 57 West 56th St., New York 19, N. Y.

This arrangement © Copyright 1963 by Neal Hefti Music, Inc.

International Copyright Secured

Printed in U.S.A.

All rights reserved including the right of public performance for profit

DB 105

THE CREEPER

Composed and Arranged by
NEAL HEFTI

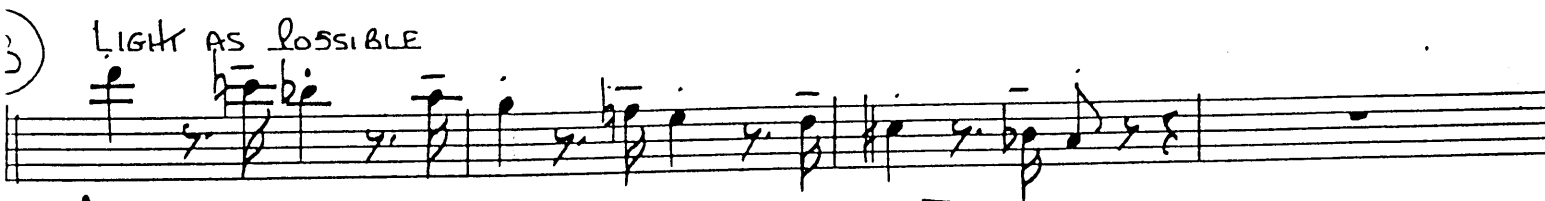
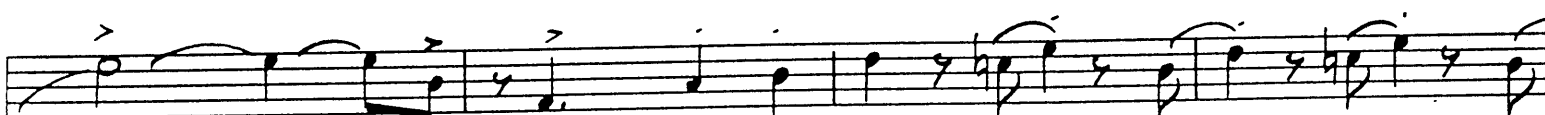
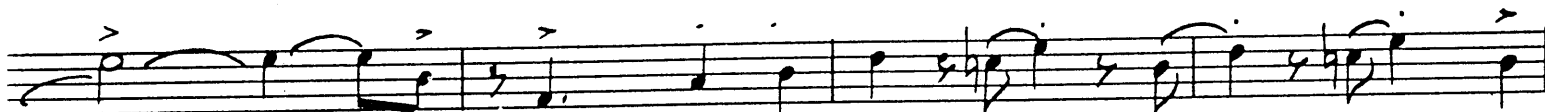
2nd Eb ALTO SAXOPHONE

MEDIUM SLOW $\text{♩} = 120$

LEGATO TONGUE



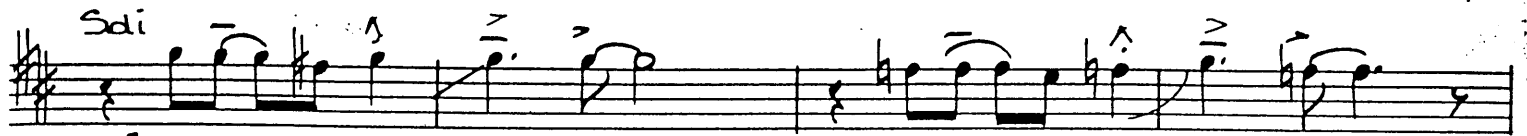
A) Soli
LONG SLIDE



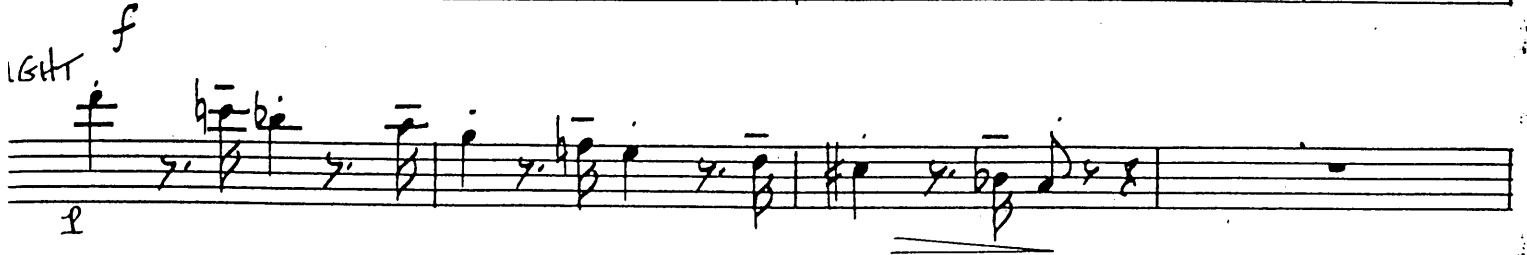
© Copyright 1961 by Neal Hefti Music, Inc., 57 West 56th St., New York 19, N. Y.
This arrangement © Copyright 1963 by Neal Hefti Music, Inc.
International Copyright Secured Printed in U.S.A.
All rights reserved including the right of public performance for profit

2nd Eb ALTO SAXOPHONE

Soli



16th f



Soli



Soli UNIS
LEGATO TONGUE



THE CREEPER

1st Bb TENOR SAXOPHONE

Composed and Arranged by
NEAL HEFTI

MEDIUM "SLOW" $\text{♩} = 120$

LEGATO TONGUE

①) Soli
LONG SLIDE

②) LIGHT AS POSSIBLE

Soli
f

Light
p

Soli
f

Soli unis
mf

LONG SLIDE

D

E

THE CREEPE

2nd B \flat TENOR SAXOPHONE

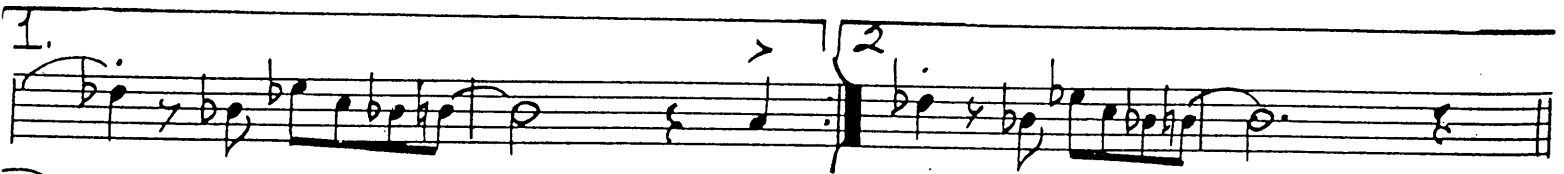
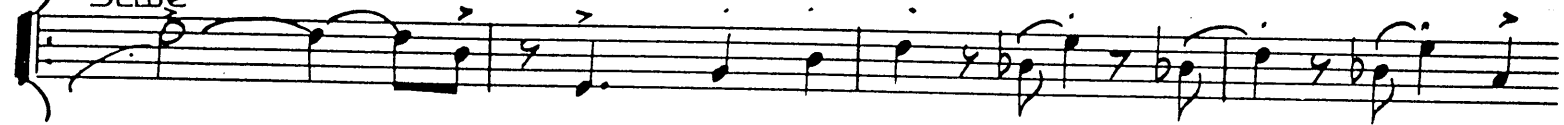
Composed and Arranged by
NEAL HEFTI

MEDIUM SLOW $\text{♩} = 120$

LEGATO TONGUE



A Soli
LONG
SLIDE



3) LIGHT AS POSSIBLE



2nd B \flat TENOR SAXOPHONE

Soli

f

LIGHT

p

Soli

f

Soli Unus

mf

©

f

f

f

f

ⓔ

fz

p

THE CREEPER

Composed and Arranged by
NEAL HEFTI

E♭ BARITONE SAXOPHONE

MEDIUM "Slide." ♩ = 120

LEGATO TONGUE

Musical notation for the first staff, featuring a treble clef, key signature of one sharp (F#), and a 4/4 time signature. The music starts with a dynamic marking of 'f' and includes a triplet of eighth notes. The staff ends with another 'f' dynamic marking.

1) Sdi,
LONG SLIDE

Musical notation for the second staff, continuing the melody with slurs and accents.

Musical notation for the third staff, continuing the melody with slurs and accents.

Musical notation for the fourth staff, continuing the melody with slurs and accents.

Musical notation for the fifth staff, continuing the melody with slurs and accents.

Musical notation for the sixth staff, including first and second endings marked '1.' and '2.'

3) LIGHT AS POSSIBLE

Musical notation for the seventh staff, starting with a dynamic marking of 'p' and ending with a double bar line.

E♭ BARITONE SAXOPHONE

Soli
f

Light
p

Soli *Soli UNIS*
f *mf*

mf

fz

p *pp*

THE CREEPER

1st TRUMPET in Bb

Composed and Arranged by
NEAL HEFTI

MEDIUM "Slow" $\text{♩} = 120$

The musical score for the 1st Trumpet part of "The Creeper" is written in B-flat major and 4/4 time. It features several sections marked with circled letters A through E. Section A includes "Har" (harmonic) markings and "LWA" (Lower Wind Area) notes with "OPEN Slowly" and "mf" dynamics. Section B contains a melodic line with "mf" dynamics. Section C is marked "UP MORE" and "Soli-UNIS LEGATO TONGUE" with "mf" dynamics. Section D and E continue the melodic development. The score concludes with "OPEN" and "Har" markings and a final "ff" dynamic marking.

Composer and Arranged by
NEAL HEFTI

2nd TRUMPET in B \flat

MEDIUM "SLOW" $\text{♩} = 120$

A **CUP MUTE**
Solo 2ND TIME ONLY (STAY CLOSE TO THIS PATTERN)

B **CUP MUTE (LEGATO TONGUE)**
Soli UNIS

OPEN **HAT**



THE CREEPER

Composed and Arranged by
—NEAL HEFTI

3rd TRUMPET in Bb

MEDIUM "Solo" $\text{♩} = 120$

f_2

A HAT

WA (OPEN SLOWLY) 3 WA 3 WA 3

mf

WA 1 2 (OPEN) mf

B

mf

C

(CUP MUTE)

SOLI-UNIS
LEGATO TONGUE

mf

D

E

(OPEN)

(HAT)

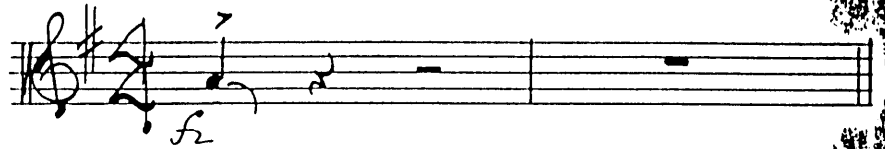
f p pp

THE CREEPER

Composed and Arranged by
NEAL HEFTI

4th TRUMPET in Bb

MEDIUM "Slow" $\text{♩} = 120$



A) **HAT**
WA OREN SLOWY 3 wa 3 wa 3
mf
wa 3 1 2 2 **OREN**
mf



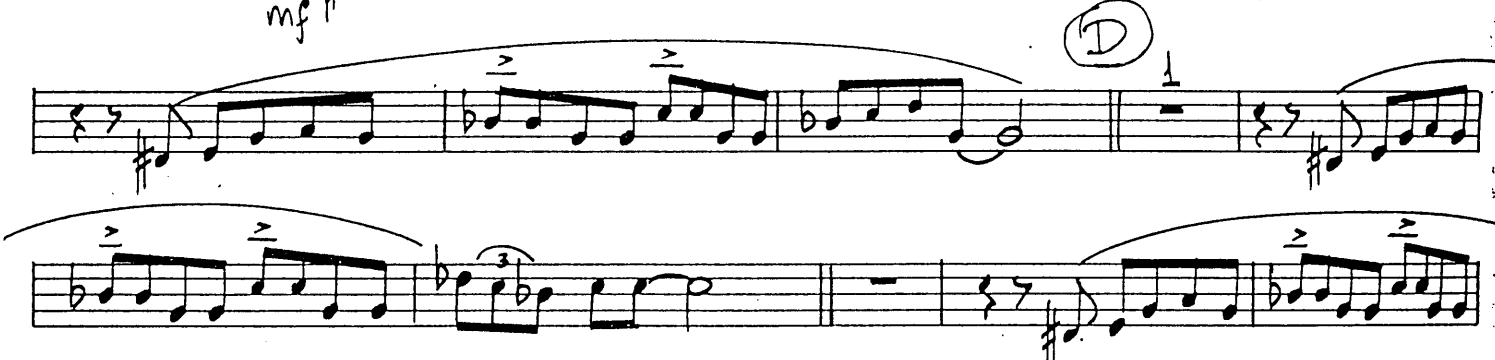
B)



C) **CLARINET** **LEGATO TONGUE**
mf
mf #



D)



E)



OREN > > > > **HAT**
f p pp



THE CREEPER

Composed and Arranged by
NEAL HEFTI

2nd TROMBONE

MEDIUM SLOW $\text{♩} = 120$

NOTES IN PARENTHESIS MAY BE OMITTED IF UNKWARD TO PLAY

(A) HAT

wa (DREN SLOWLY)

wa

wa

mf

wa

1.

2

2.

(DREN)

mf

(B)

Musical staff with notes and slurs. Includes a circled '2' at the end of the staff.

Musical staff with notes and slurs.

mf

Soli UNIS

(C)

Musical staff with notes and slurs. Includes a circled 'C' and the text 'LONG SLIDE'.

mf

LONG SLIDE

Musical staff with notes and slurs.

Musical staff with notes and slurs.

(E)

Musical staff with notes and slurs. Includes a circled 'E' and the text 'f'.

f

(HAT)

Musical staff with notes and slurs. Includes a circled 'HAT'.

3rd TROMBONE

CREEPER

Composed and Arranged by
NEAL HEFTI

MEDIUM SLIDE ♩ = 120

NOTES IN PARENTHESIS MAY BE OMITTED IF AWKWARD TO PLAY



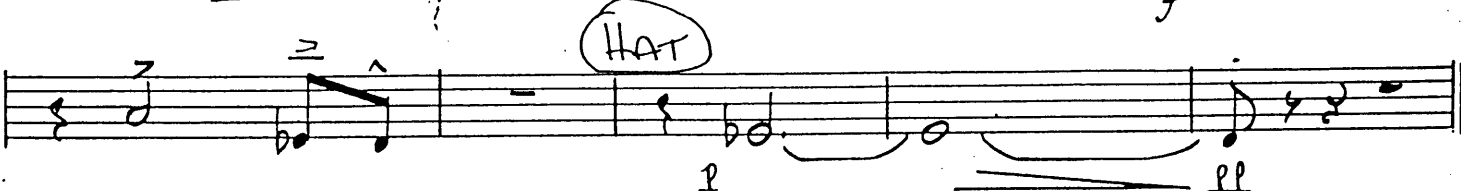
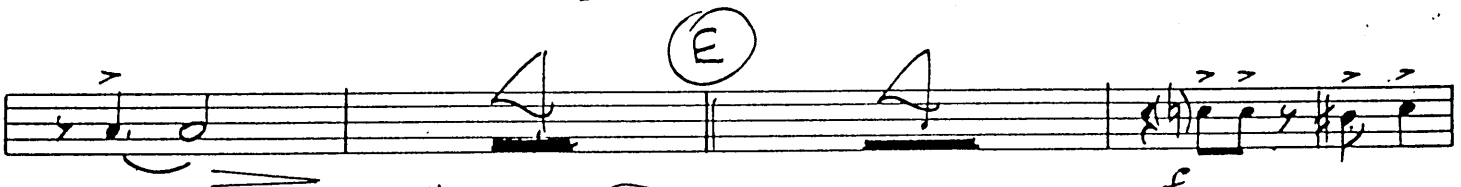
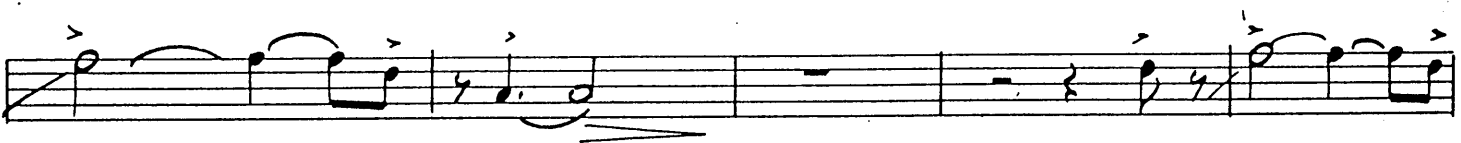
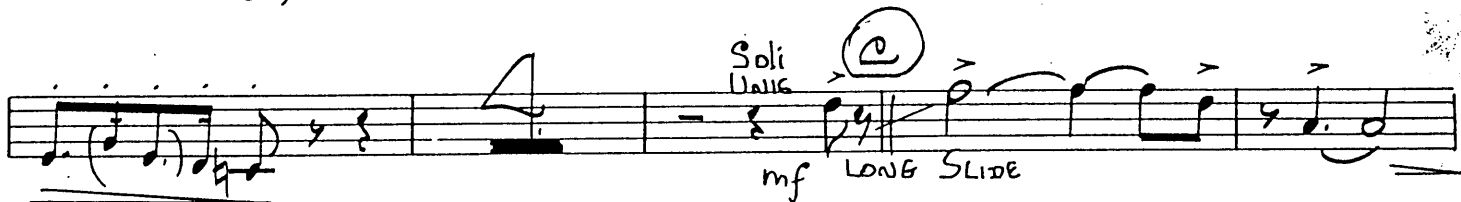
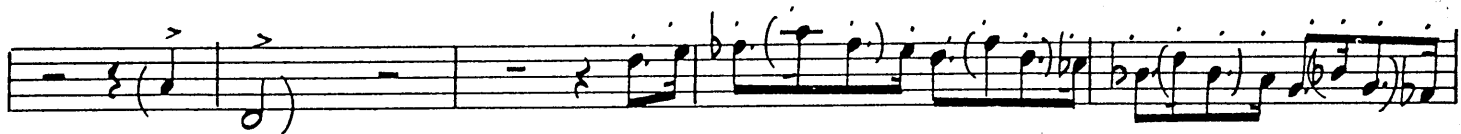
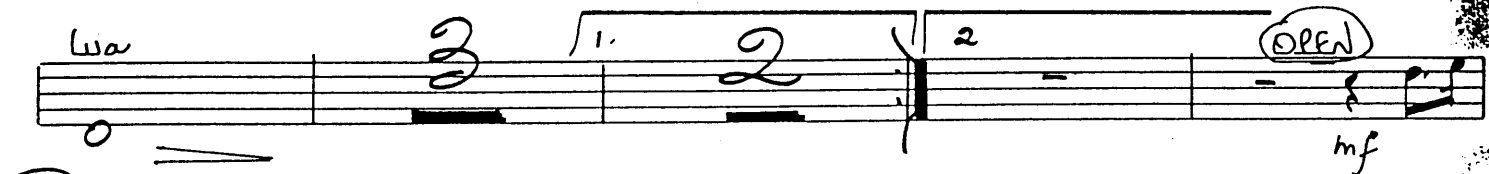
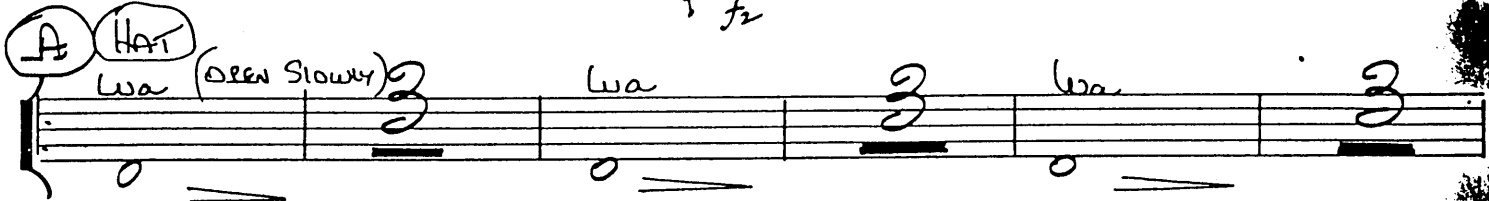
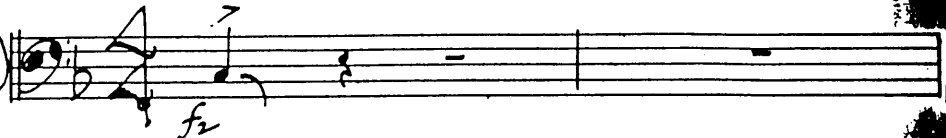
© Copyright 1961 by Neal Hefti Music, Inc., 57 West 56th St., New York 19, N. Y.
This arrangement © Copyright 1963 by Neal Hefti Music, Inc.
International Copyright Secured Printed in U.S.A.
All rights reserved including the right of public performance for profit

THE CREEPER

4th TROMBONE

MEDIUM "SLOW" $\text{♩} = 120$

NOTES IN PARENTHESES MAY BE OMITTED IF TOO AWKWARD TO PLAY



THE CREEPER

Composed and Arranged by
NEAL HEFTI

PIANO

MEDIUM Slow $\text{♩} = 120$ (A)

Musical notation for the first system (measures 1-5). The piece is in 4/4 time with a tempo of 120 beats per minute. The key signature has one flat (B-flat). The first measure contains a Gm7 chord. A double bar line with a circled 'A' above it marks the start of the first section. The following measures contain the following chords: Fmaj9, F6, Fm7 - Bb9, and Fm7 - Bb9 Gm7. The bass line features a steady eighth-note accompaniment.

Musical notation for the second system (measures 6-10). The chords are: Fmaj9, F6, Fm7 - Bb9, Fm7 - Bb9 Gm7, Fmaj9, and F6. The bass line continues with eighth-note accompaniment.

Musical notation for the third system (measures 11-15). The chords are: Fm7 - Bb9, Fm7 - Bb9 Gm7, Fmaj9, F6, Fm7 - Bb9, and Fm7 - Bb9. The bass line continues with eighth-note accompaniment.

Musical notation for the fourth system (measures 16-20). The piece is divided into two parts, 1 and 2, by a double bar line. Part 1 (measures 16-17) contains Db9 and Db chords. Part 2 (measures 18-20) contains F and Gm7 chords. A circled 'B' above the double bar line indicates the start of the second section. The bass line continues with eighth-note accompaniment.

Musical notation for the fifth system (measures 21-25). The chords are: C7, Gm7b5 - C7, Fm7, and Eb9 - Fm7. The bass line continues with eighth-note accompaniment.



Handwritten musical score for the first system, featuring a grand staff with treble and bass clefs. The right hand plays a melodic line with eighth and sixteenth notes. The left hand plays a bass line with eighth notes and rests. Chords are indicated by letters C7 and Bbm6 C7 Db9 C7b9.

Handwritten musical score for the second system, including dynamics like "mf" and "no Soli". It features a grand staff with treble and bass clefs. Chords include Fmaj9, Fb, Fm7, and Bb9. A circled "C" is present above the staff.

Handwritten musical score for the third system, featuring a grand staff with treble and bass clefs. Chords include Fmaj9, Fb, Fm7, and Bb9. A circled "D" is present above the staff.

Handwritten musical score for the fourth system, featuring a grand staff with treble and bass clefs. Chords include Fm7, Bb9, Fmaj9, Fb, Fm7, and Bb9.

Handwritten musical score for the fifth system, including dynamics like "mf" and "Soli". It features a grand staff with treble and bass clefs. Chords include Db9, Gm7, and F. A circled "E" is present above the staff.

Handwritten musical score for the sixth system, including dynamics like "fz" and "pp". It features a grand staff with treble and bass clefs.

THE CREEPER

Composed and Arranged
NEAL HEFTI

DRUMS

MEDIUM SLOW $\text{♩} = 120$

(BRUSHES ALL THE WAY)

(SOLO)

(A) STRONG "2"